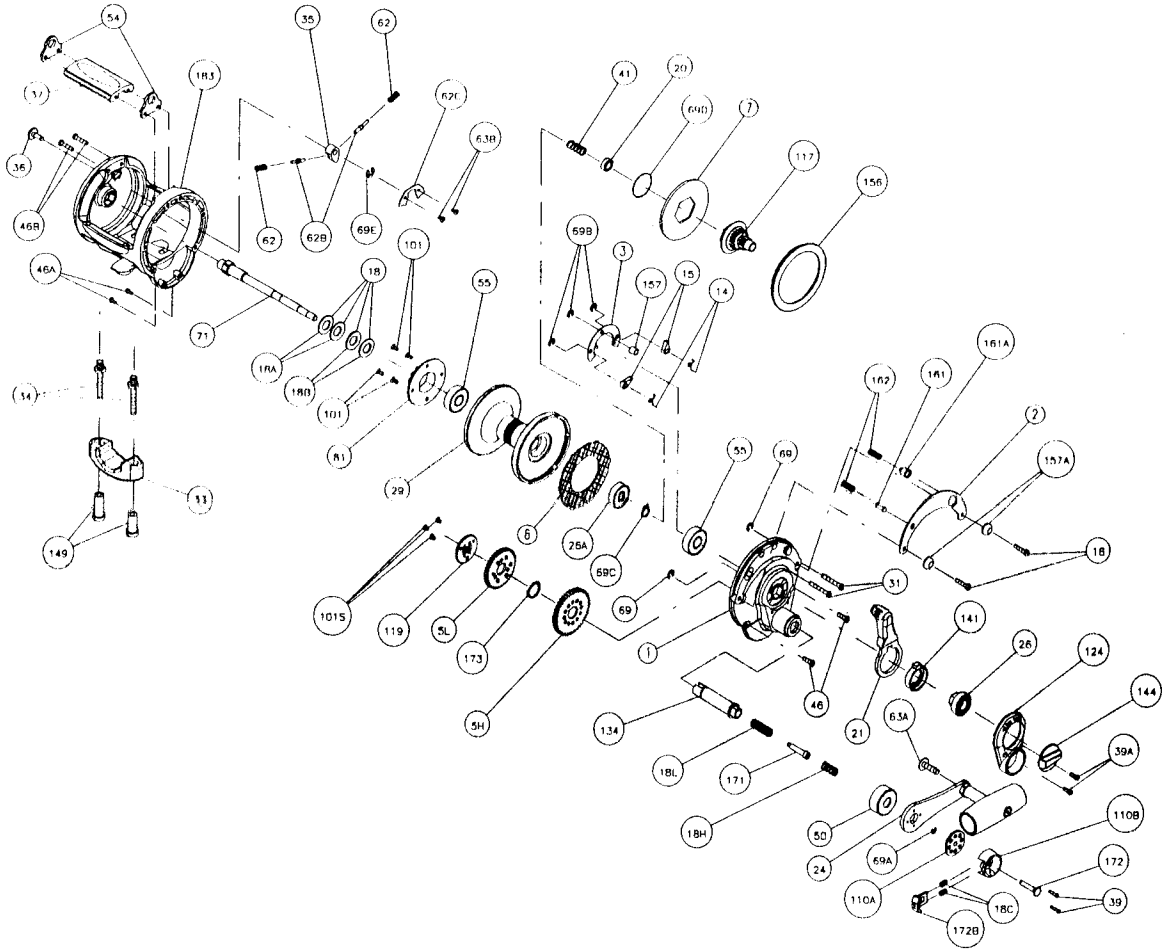




PARTS AND PRICE LIST FOR MODEL 10KG AND 15KG



Key No.	Part No.	Description	Price	Key No.	Part No.	Description	Price
1	001 015KG	Right Side Plate Assembly	\$12.00	50	050 015KG	Gear Stud Shield	\$2.50
2	002 015KG	Quadrant Ring	5.00	54	054 015KG	Harness Lug (2 req.)	2.25
3	003 015KG	Dog Bridge	.75	55	055 080	Ball Bearing (2 req.)	16.00
5H	005 015KGHS	Main Gear (High Speed)	13.00	62	062 545	Click S0pring	.45
5L	005 015KGLS	Main Gear (Low Speed)	20.00	62B	062B525	Click Pin (2 req.)	.65
6	006 015KG	Drag Washer	5.75	62C	062C015KG	Click Spring Cover	.75
7A	007 015KG	Metal Drag Washer	6.60	63A	063A050	Handle Stud Screw	1.25
13	013 015KG	Pinion Gear	5.75	63B	063 500S	Spring Cover Screw (2 req.)	.80
14	014 015KG	Dog Spring (2 req.)	.75	63C	063 050	Screw	.75
15	015 015KG	Dog (2 req.)	.80	69	069B050	Retaining Ring (2 req.)	.80
16	016 060CH	Side Plate Screw (2 req.)	.45	69A	069B030S	Retaining Ring	.80
18	018 050T W	Disc Clutch Spring (4 req.) (15KG only)	.90	69B	069B600	Retaining Ring (3 req.)	.90
18A	018 050W	Light Disc Clutch Spring (2 req.) (10KG only)	.90	69C	069C015KG	Spindle Retaining Ring	1.50
18B	018 050T W	Heavy Disc Clutch Spring (2 req.) (10KG only)	.90	69D	069D015KG	Retaining Ring	.90
18C	018C015KG	Shift Button Spring (2 req.)	.60	69E	069B600	Retaining Ring	.90
18H	018H015KG	Shift Spring (Heavy)	.60	71	071 010KG	Spool Spindle (10KG only)	3.15
18L	018L015KG	Shift Spring (Light)	.75	71	071 015KG	Spool Spindle (15KG only)	3.25
20	020 4200	Spindle Ball Bearing	10.00	81	081 040	Click Ratchet	3.10
21	021 015KG	Eccentric Lever	5.25	91	091N050	Handle Rivet	2.50
24	024 015KG	Handle Complete	18.00	101	101 030	Ratchet Screw (4 req.)	.45
24A	024 015KG-1	Handle Blank	5.00	101S	101 050S	Retaining Plate Screw (4 req.)	.45
24C	024C050	Handle Knob Cap	1.25	110A	110A015KG	Handle Locking Plate	2.10
25	025 050	Handle Knob	6.00	110B	110B015KG	Shift Housing	2.25
28	028 015KG	Bushing	.50	117	117 015KG	Drive Plate	7.75
26A	026 040	Spool Ball Bearing	12.00	119	119 015KG	Retaining Plate	2.35
29	029L 010KG	Spool (10KG only)	27.00	124	124 015KG	Bridge Cover	2.00
	029L 015KG	Spool (15KG only)	30.00	134	134 015KG	Gear Stud	8.50
31	031 015KG	Long Screw (2 req.)	.55	141	141 015KG	Cam Follower	2.95
33	033 113	Rod Clamp (10KG only)	4.00	144	144 015KG	Presel Knob	7.75
	033 340	Rod Clamp (15KG only)	5.50	149	149 045	Rod Clamp Nut (2 req.)	1.00
34	034 975	Rod Clamp Screw (2 req.)	1.75	156	156 015KG	Drag Cover	3.75
35	035 310N	Click Tongue	1.15	157	157 050	Spacer Bushing	.60
36	036 015KG	Click Button	2.50	157A	157 015KG	Spacer Bushing	.90
37	037A010KG	Top Spacer Bar (10KG only)	5.25	161	161 025	Free Spool Button	1.25
	037A015KG	Top Spacer Bar (15KG only)	5.50	161A	161 040	Strike Button	1.30
39	039 001	Shift Housing Screw (2 req.)	.40	162	162 050	Button Spring (2 req.)	.50
39A	039 015KG	Bridge Screw (2 req.)	.75	171	171 015KG	Shift Plunger	2.75
41	041 015KG	Spindle Spring	4.00	172	172 015KG	Shift Button (Low)	2.00
46	046 750	Short Screw (2 req.)	.45	172B	172B015KG	Shift Button (High)	6.00
46A	032 002	Frame Screw (2 req.)	.40	173	173 015KG	Retaining Ring	.80
46B	046 9500	Long Frame Screw (2 req.)	.50	183	183 010KG	Frame (10KG only)	36.00
					183 015KG	Frame (15KG only)	38.00